



Blackpool Council

Youth Hub

Peter Legg, Head of Economic & Cultural Services

Vanda De Freitas, Head of Work & Health Programmes

Youth Employment Challenge

When we talk youth unemployment – or young NEETs (Not In Employment Education or Training) we normally think of two age groups:

- **16/17 year olds** - LA duty to track and monitor EET position....latest 9.6% NEET/unknown....
- **18-24 year olds** – at this age NEETs fall within the responsibility of Jobcentre Plus to help them to find work, especially if claiming benefits such as Universal Credit.
- **Pandemic impact** heightened challenge of young people finding work esp in retail hospitality and leisure sectors ... + how many will return from furlough? Have apprenticeship opportunities been disrupted?
- **Blackpool lacks an integrated NEET strategy**it starts in schools (NEETS prevention). There is a new Education Strategy and approach emerging.

Claimant Count (unemployment claimants – March '21)

Claimant count by sex - not seasonally adjusted (March 2021)

	Blackpool (Numbers)	Blackpool (%)	North West (%)	Great Britain (%)
All People	10,530	12.4	7.1	6.5
Males	6,705	15.7	8.7	7.7
Females	3,825	9.1	5.5	5.3

Source: ONS Claimant count by sex and age

Note: % is the number of claimants as a proportion of resident population of area aged 16-64 and gender

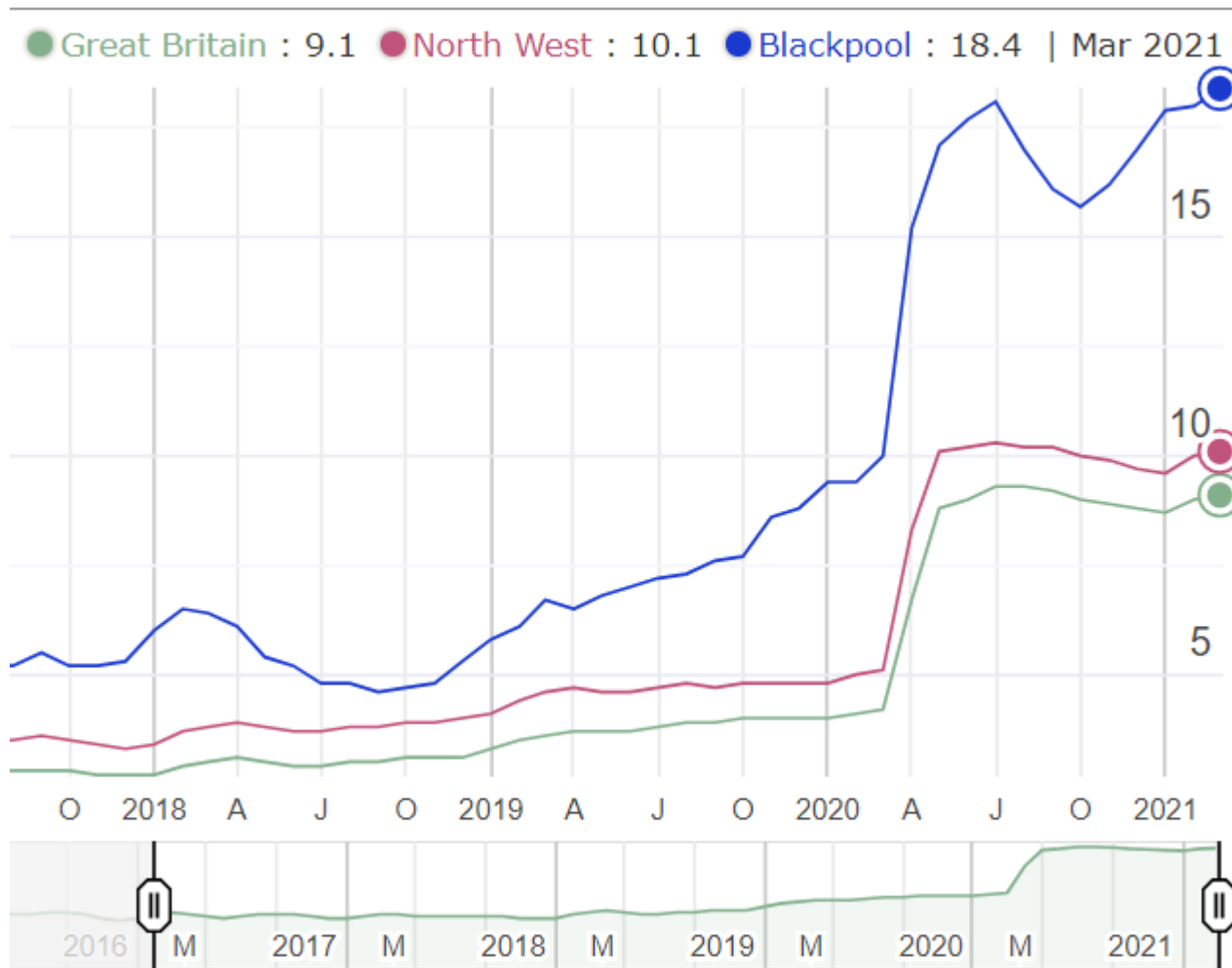
Claimant count by age - not seasonally adjusted (March 2021)

	Blackpool (Level)	Blackpool (%)	North West (%)	Great Britain (%)
Aged 16+	10,530	12.4	7.1	6.5
Aged 16 To 17	30	1.0	0.4	0.4
Aged 18 To 24	1,970	18.4	10.1	9.1
Aged 18 To 21	1,160	20.3	10.2	9.0
Aged 25 To 49	5,715	13.8	8.0	7.1
Aged 50+	2,815	9.5	5.1	5.1

Source: ONS Claimant count by sex and age

Note: % is number of claimants as a proportion of resident population of the same age

Claimant Count (18-24's – trend pre and during pandemic)



Claimant Count 18-24's (highest rate in country, March '21)

Rank By %	District	Number	Rate %
1	Blackpool	1,970	18.4
2	Oldham	3,260	16.4
3	Thanet	1,565	15.7
4	Burnley	1,025	15.6
5	Croydon	4,225	15.3
6	Wolverhampton	3,270	15.3
7	Sandwell	4,045	15.3
8	Bradford	6,995	15.2
9	Barking and Dagenham	2,675	14.9
10	Tendring	1,395	14.8
11	Knowsley	1,800	14.7
12	Lewisham	3,580	14.6
13	Haringey	3,270	14.6
14	Hartlepool	1,055	14.5
15	Waltham Forest	3,035	14.5
16	Hastings	995	14.4
17	Peterborough	2,020	14.2
18	South Tyneside	1,575	14.1
19	Denbighshire	865	13.9
20	Darlington	1,015	13.8

So what is a Youth Hub and how can it help?

Part of government's Plan for Jobs: in particular the Youth Offer....

- Kickstart etc
- Traineeships
- Apprenticeships
- Youth Hub

Target Group

- 16-24 NEETs
- 'Middle Group'... not closest to work nor too complex
 - i.e. need help with a number of issues, but not overly complex.
Work and learning focussed confidence building, training, work experience...

Youth Hub – Key Features/Offers

Core

- Dedicated space for young people – 16-24's
- Co-located JCP Youth Work Coaches...
- Work with partners & employers ...a shared space
- Widely promoted

Offer

- Initial need assessments – towards a positive destination
- Employability training & 121 coaching
- Support with Kickstart vacancy applications
- Bespoke/specialist support such as debt advice/money management, Housing, Health, Substance misuse, etc
- Digital support – such as job search
- Business start up
- Offer may expand as required

Youth Hub – Key Partners

Jobcentre Plus

Blackpool Council

- Economic Development (Work & Health Team); Adult Learning
- Blackpool Young People's Service, Housing..

B&F College

National Careers Service

BFC Community Trust

Princes Trust

Range of third sector organisations e.g. UR Potential, Volunteer Ctr, etc

'Invest in Youth' delivery partners

Restart ...new LTU employability programme 16+

Key point is a range of offers but not cohesive/joined up and question over whether capacity to match the challenge...

Youth Hub – Key Outcomes & Funding

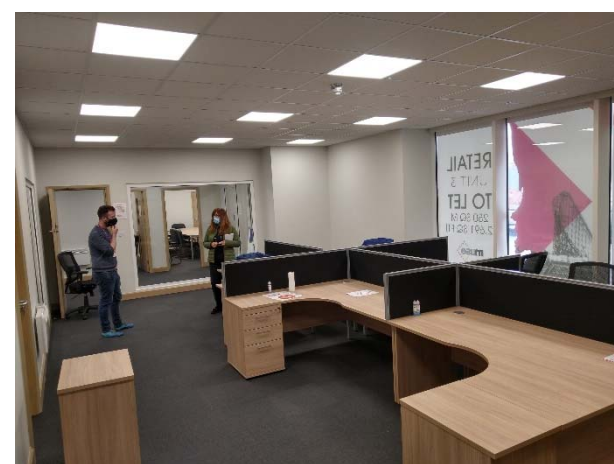
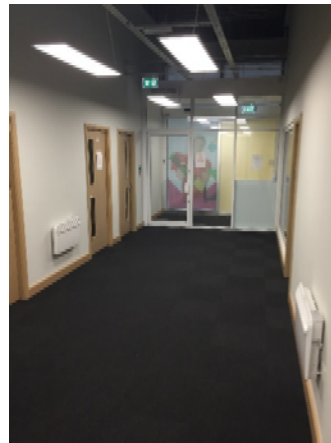
Over 3 years ...initial estimate to be refined

- 300 employers engaged
- 200 young people supported into employment/training

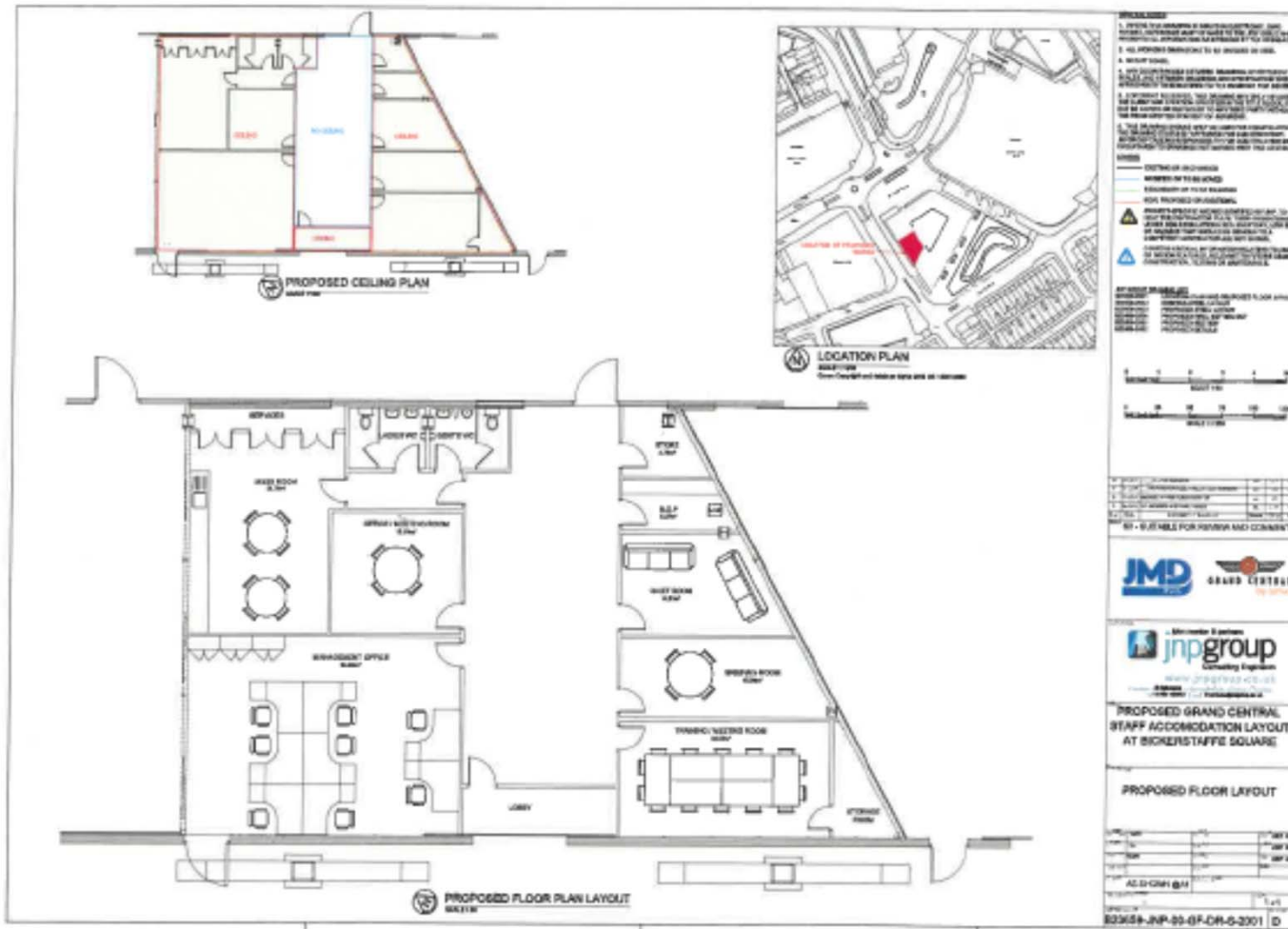
General outcomes

- Co-ordinated provider working
- Integrated offer for young people in one central hub
- 'Go to' place for employers
- Explore other funding and commissioning options to expand NEETs provision e.g. UK Community Renewal Fund, Shared Prosperity Fund

Youth Hub – Location



Youth Hub – (Current) Layout



Youth Hub – Next Steps

- Risk assess/initial fit out of space... we now have access 😊
 - Existing teams – JCP, BC Kickstart Team, LA NEETs.. 6-8 staff
- Governance: Task & Finish Groupthen Steering Group
- Funding/cases:
 - CRF bid (£443k) – to accelerate team set up/partner working/branding (Aug 21 – March 22).
 - Towns Fund (Apr 22+) business case for Towns Fund (£500k), aiming for August business case.
 - DWP contribution.. (c£100k), subject to a CPF bid.
- We have to cover....
 - Property costs (rent/rates etc) + minor changes, install IT suite
 - Staffing (ideally.. YH Coordinator, 5 advisors, admin – 7 staff)
 - Specialist support for young people ...where there is a gap.