

Business and the Local Economy

Employment Units and their Employees

Key Facts

- Blackpool is under-represented in manufacturing “business units” and over-represented in distribution, hotels and restaurants. (Source: ABI, NOMIS website)
- The vast majority of business units in Blackpool employ 1-10 employees and only a small percentage have 50 or more employees. This pattern is similar to the national figures. (Source: ABI, NOMIS website)
- Public administration, education and health accounts for the largest group of employees (36.3%) followed by Distribution, hotels and restaurants (32.8%) of employees in Blackpool in 2007. 10.8% of employees in Blackpool were in Banking, Finance and Insurance in 2007. (Source: ABI, NOMIS website)

Employment Units and their Employees

Employment units

The table below shows the distribution of employment units for a selection of geographical comparators. An “employment unit” may be an entire company, provided it operates on one single site or a single site of a multi site company operation.

The other three northern comparators have a larger proportion of “business units” in manufacturing whereas Blackpool’s strength is in the distribution, hotels and restaurants sector. Banking, finance and insurance etc make up almost one quarter of Blackpool’s employment units compared to one third in Great Britain in 2007.

Table 1: Percentage distribution of “employment units” by broad industrial groups, comparative percentages in 2007

	Blackpool	Blackburn	Lancashire County	Northwest Region	Great Britain
	%	%	%	%	%
Agriculture & fishing	-	-	0.4	0.3	0.5
Energy & water	-	-	0.2	0.2	0.2
Manufacturing	5.7	9.9	8.0	7.0	6.7
Construction	8.5	7.7	10.6	9.4	9.7
Distribution, hotels and restaurants	39.5	33.6	30.2	29.6	27.5
Transport and communications	3.2	4.3	4.7	4.5	4.3
Banking, finance and insurance, etc.	24.1	24.5	29.0	31.4	33.4
Public administration education and health	10.9	12.3	9.3	9.7	9.4
Other services	8.0	7.6	7.6	7.8	8.3

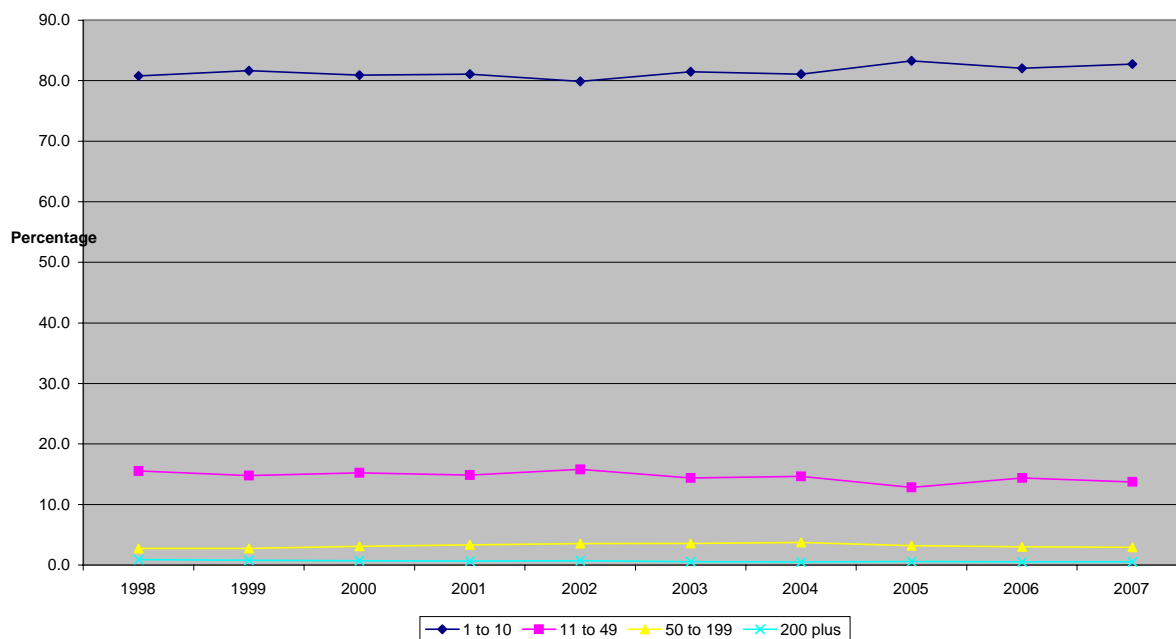
Source: Annual Business Inquiry, NOMIS

Note: An “employment unit” may be an entire company, provided it operates on one single site or a single site of a multi site company operation. - suppressed data

Business and the Local Economy

Chart 2 shows Blackpool employment units categorised by their number of employees for the period between 1998 and 2007. The chart shows some fluctuation during the period. Over four fifths (82.7%) of employment units had 1-10 employees in 2007. The percentage of employment units with a size band of 1-10 employees has increased by 1.9% between 1998 and 2007. Employment Units with a size band of 11 to 49 decreased by 1.7%, those with 50 to 199 employees increased by 0.1% and those with 200 plus employees decreased by 0.4% during the period 1998 to 2007.

Chart 2: Percentage Distribution of Employment Units by Size Bands
(Source: Annual Business Inquiry, NOMIS)



Note: An “employment unit” may be an entire company, provided it operates on one single site or a single site of a multi site company operation.

The table below compares the size of Blackpool companies with selected areas. More than four fifths of employment units were small (1-10 employees) in Blackpool, Lancashire, the Northwest and Great Britain, and almost four fifths of employment units in Blackburn were in small employment units in 2007.

13.8% of employment units in Blackpool had 11 to 49 employees compared to 13.1% in the Northwest, and 12% in both Lancashire County and Great Britain. Blackburn had 15.4% of its employment unit with 11 to 49 employees.

2.9% of Blackpool’s employment units had 50 to 199 employees as also did Great Britain and Lancashire County. The Northwest had 3.2% and Blackburn had 4.1% of its employment units with 50 to 199 employees.

Blackpool had a small percentage of employment units (0.5%) with 200 plus employees compared to 0.6% in Lancashire County, 0.7% in both the Northwest and Great Britain, and 0.8% in Blackburn.

Table 3: Types of “employment units”, comparative percentages in 2007					
	Blackpool	Blackburn	Lancashire County	Northwest	Great Britain
1-10 employees	82.7	79.7	84.4	83.0	84.5
11-49 employees	13.8	15.4	12.0	13.1	12.0
50-199 employees	2.9	4.1	2.9	3.2	2.9
200 or more employees	0.5	0.8	0.6	0.7	0.7
Source: Annual Business Inquiry, NOMIS					
Note: An “employment unit” may be an entire company, provided it operates on one single site or a single site of a multi site company operation.					

The table below shows the percentage of the workforce in key employment sectors. It can be seen that the most dominant sectors in Blackpool are “public administration, education and health accounting for 36.3% of employees and “distribution, hotels and restaurants” with 32.8% of employees in 2007. These are higher percentages than in Blackburn, Lancashire, the Northwest and Great Britain.

Blackburn, Lancashire County, the Northwest Region and Great Britain have a higher percentage of employees in the manufacturing sector than Blackpool.

Table 4: Percentage distribution of employees within the “employment units” by selected broad industrial groups in 2007					
	Blackpool	Blackburn	Lancashire County	Northwest Region	Great Britain
Selected broad industrial groups	%	%	%	%	%
Manufacturing	6.6	21.7	17.1	12.4	10.6
Construction	3.2	3.3	5.2	5.1	4.9
Distribution, hotels & restaurants	32.8	19.3	23.9	23.7	23.3
Transport and communications	2.9	5.0	4.4	5.6	5.9
Banking, finance and insurance etc.	10.8	13.8	15.3	19.4	21.6
Public administration, education and health	36.3	30.5	29.2	28.2	26.9
Other services	7.2	6.3	4.2	4.6	5.2
Source: Annual Business Inquiry, NOMIS					
Note: An “employment unit” may be an entire company, provided it operates on one single site or a single site of a multi site company operation.					

Business and the Local Economy

Glossary

- ABI Annual Business Inquiry
- NOMIS National Online Manpower Information Service

Where can I get further information on the issues covered in Blackpool Figures?

[NOMIS website](#)

If further advice is required contact:

corporate.policy@blackpool.gov.uk

Telephone: 01253 477121

Crown Copyright material is reproduced with the permission of the Controller of HMSO.