

Complaints, Thanks and Ideas.

We want to know what you think of the services we provide. We also want to know if you have any ideas about how we could improve our services or if you have a complaint. You can contact your social worker or, if you would prefer, the Customer Care Team on 01253 651950. E-mail social.services@blackpool.gov.uk.



To make sure our services are accessible to all, documents prepared by Blackpool Council are available in large print, Braille, on audio-cassette or on computer disc upon request. We can also provide help for British Sign Language users and provide information in other languages. Please ask for details or telephone 477477.

Approved by Blackpool Service Users Forum.

July 2007

Supported Living for Adults with a Learning Disability



**Blackpool Learning
Disability Partnership**



We help adults with a learning disability to live in their own homes. We provide support and care to meet daily living needs.

We have a choice of housing in Blackpool. This includes:

- single houses/flats
- shared houses
- adapted property

We can also provide support to you if you have a home of your own.

What kind of help can we give?

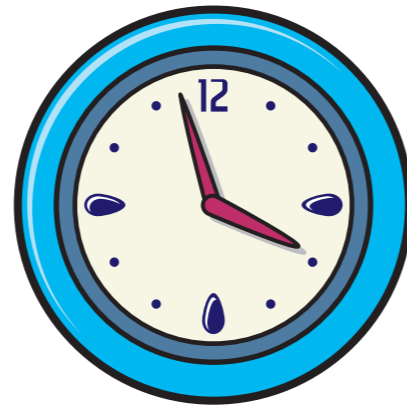
The amount of care and support will depend on your needs. It may be 2 hours a day or 24 hours a day.

We provide help with daily living skills such as:

- cooking, washing, cleaning and shopping



- personal care
- paying bills and managing money



- finding a job
- leisure and education
- finding health services



We can also offer specialist support if you are having extra problems in your life.

To use the service you must first have an assessment to see if the service meets your needs. You will be asked about your life, including your health and mobility, to decide what services will best suit you.



How do you find out more?



To find out more about services please telephone Social Services Direct on (01253) 477592. They take all the calls for Adult Social Care and will be able to help you.

They are open Monday - Thursday, 9am - 5pm, Friday, 9am - 4.30pm

You can also contact them by e-mail at social.servicesdirect@blackpool.gov.uk

If you need help from Adult Social Care in an emergency outside office hours please telephone (01253) 477600.