

For more information or advice

Visit the Customer First Centre,
Corporation St, Blackpool.

Call Centre

You can phone us on:
01253 478847

Opening Times

8.00 am to 6 pm
on Monday, to Friday.
9.00 am to 2.00 pm on Saturday

We issue last tickets for the enquiry service
10 minutes before closing time.

Customer First

Town Hall PO Box 50
Corporation Street
Blackpool
FY1 1NF

Fax: 01253 478808
Email: revenues@blackpool.gov.uk

Blackpool Council believes in Access for All

To ensure services provided by Blackpool Council are accessible information is available upon request in a variety of accessible formats including large print, Braille, on audio cassette or computer disk.

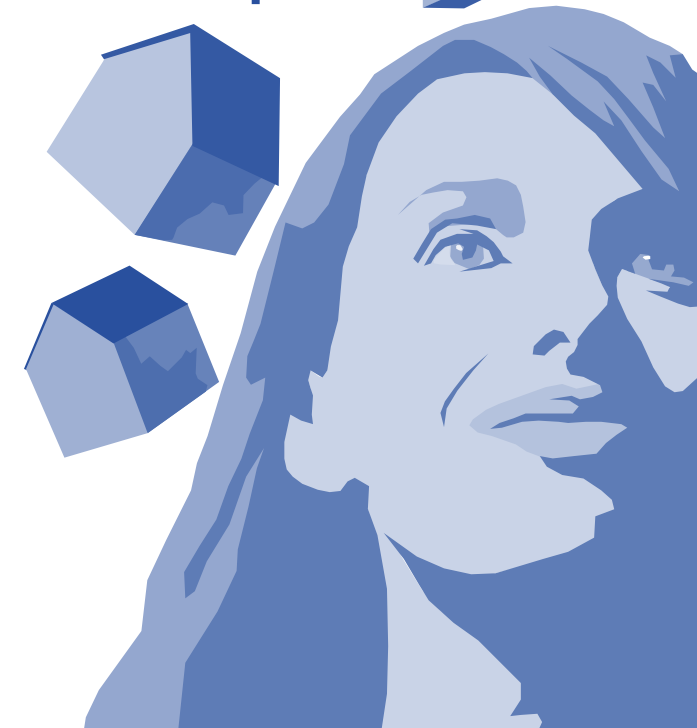
We can also provide help for British Sign Language users and provide information in languages other than English.

Please ask for details.

J/63616 8/07

Council Tax

Are you exempt?



Dedicated to quality customer service Call: 01253 478847

This information is for guidance only. Please contact us to talk about your individual circumstances and we will be able to give you more information.

You can also get information from our website - www.blackpool.gov.uk

Are you exempt?

Exemptions and empty property discounts

Some properties are exempt from Council Tax. Some of the different classes of exemption are listed below

Properties that are only lived in by

- Full time students (they must send us a Council Tax certificate from their place of study).
- Severely mentally impaired people.
- People who are under 18; or
- Elderly or disabled relatives of a family who live in the main property, in certain annexes and self-contained accommodation.

Unoccupied properties which:

- Are not furnished, are exempt for up to six months (after that, there is a 50% discount).
- Are owned by a charity, are exempt for up to six months.
- Are left empty by someone who has moved to receive care in a hospital or home else-where.
- Are left empty by someone who has gone into prison.

- Are left empty by someone who has moved so they can care for someone else.
- Are waiting for probate (proof that a will is valid) to be granted, and for six months after probate is granted.
- Have been repossessed.
- Are the responsibility of a bankrupt's trustee.
- Are waiting for a minister of religion to move in.
- Are left empty by a student whose term-time address is elsewhere.
- Are empty because it is against the law to live there.
- Form part of another property and may not be let separately; or
- Are not furnished and need structural alteration or major repair work to make them suitable to live in. (The exemption will apply for six months after the work is done if the property remains unoccupied and unfurnished).

From 1st April 2000, the Government has set a 12 month limit on this exemption, regardless of whether the work has been finished. After that period there is a 50% discount.

A pitch or mooring that doesn't have a caravan or boat on is also exempt.

If you feel that you may be entitled to an exemption, please contact the Customer First Centre without delay and we may be able to give you a decision on your case straightaway.

