

Crime and Community Safety

1 [Introduction](#)

This document considers crime and community safety issues. It will present information based on the Home Office Crime categories. Data for Blackpool will be presented for the last four years from the Lancashire Constabulary, plus the latest comparative data from the Home Office.

The comparative table contains the rate of crime per 1,000 head of population. The crime rates from Lancashire Area, the Northwest region and England and Wales are included as are those for Manchester, geographically the closest major city.

A more detailed analysis of Crime in Blackpool is presented in the [Blackpool Community Safety and Drugs Partnership, Crime, Disorder and Drugs Audit 2004](#).

Recorded Crime statistics are provided to the Home Office by the police. The Crime and Disorder Reduction Partnerships made up of the police, the police authority, the local council, the Primary Care Trust and the Fire and Rescue Service have a statutory requirement under the Crime and Disorder Act 1998 to develop and implement strategies for tackling crime and disorder in the local area. The local Crime and Disorder Reduction Partnership is known as [BSafe Blackpool](#)

The British Crime Survey national statistics and the differences between those figures and police recorded crime nationally are looked at. Later on in this document trends in the British Crime Survey comparator crimes for Blackpool are shown.

Trend data has been obtained from the Multi Agency Data Exchange, Safer Lancashire Community Partnership website and comparative data has been obtained from the Home Office website.

Crime consists of the following broad categories according to the Home Office:

- Burglary
- Criminal Damage
- Offences Against Vehicles
- Other Theft
- Drug Offences
- Violence Against Person
- Fraud and Forgery
- Robbery
- Sexual Offences
- Other Offences

Home Office crime figures are based on police recorded crimes.

2 [Key Facts](#)

3 [National Crime Comparisons British Crime Survey and Recorded Crime](#)

4 [All Crime](#)

5 [Burglary](#)

6 [Criminal Damage](#)

- 7 [Drug Offences](#)
- 8 [Fraud and Forgery](#)
- 9 [Robbery](#)
- 10 [Sexual Offences](#)
- 11 [Vehicle and Other Theft](#)
- 12 [Violence Against Person](#)
- 13 [Other Offences](#)
- 14 [Blackpool British Crime Survey Comparator Crime](#)
- 15 [English Indices of Deprivation 2007: Crime Domain](#)

[Glossary](#)

2 Key Facts

- The English Indices of Deprivation 2007 show that there are pockets of high crime deprivation in the town centre stretching towards the South along the promenade and also in part of Park Ward.
- There was a 12.7% reduction in total police recorded crimes in Blackpool between 2006/07 and 2007/08.
- More than one quarter (26.3%) of Blackpool's recorded offences in 2007/2008 were Violence Against Person. Violence Against Person now includes harassment, which includes low-level public order offences.
- Offence Rates for Violence Against the Person was higher in Blackpool (34.8) in 2007/2008 than the national rate (17.9), the rate in the Northwest (17.3), the rate in Lancashire Area (21.5) and the rate in Manchester (28.8).
- Nearly one quarter (24.2%) of Blackpool's recorded offences in 2007/08 were criminal damage.
- More than one fifth (22.6%) of Blackpool's recorded offences during 2007/08 were Other Theft Offences and 7.8% were Offences Against Vehicles
- 9.6% of Blackpool's recorded offences during 2007/08 were Burglary Offences.
- The largest percentage increase between 2006/07 and 2007/08 was drug offences (43.8%); however, drug offences make up only 3.6% of recorded crimes in 2007/08. Drug offences may fluctuate with levels of police activity.
- British Crime Survey comparator crimes in Blackpool reduced by 13.8% between 2006/2007 and 2007/2008.
- British Crime Survey comparator acquisitive crimes showed a reduction of 29.1% between 2006/2007 and 2007/2008.
- British Crime Survey comparator violent crime has increased by 4.9% between 2006/2007 and 2007/08.
- British Crime Survey comparator damage crime had reduced by 14.3% between 2006/2007 and 2007/08.

3 National Crime Comparisons British Crime Survey and Police Recorded Crime

The British Crime Survey (BCS) is a large survey of a representative cross sample of people in England and Wales. It asks about people's experiences of crime and their perceptions. It provides the most reliable measure of the true extent of crime and of national trends over time, as it is not affected by whether the public report crime or changes to the way the police record crime.

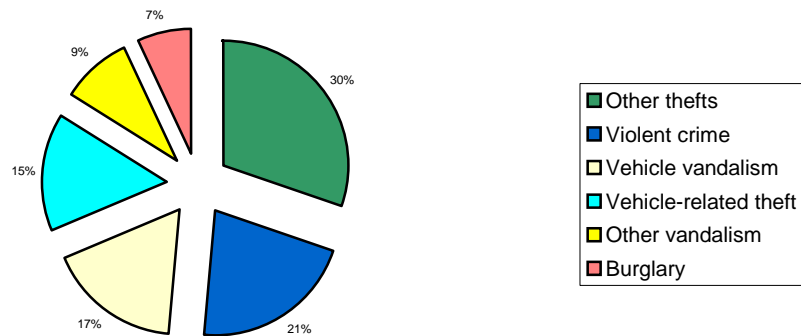
Police recorded crime are statistics collected by the police, and cover crimes which are reported to and then recorded by them. The British Crime Survey does not include under 16's and commercial crime. There are also different categories used.

The majority of crimes are property related.

- Vandalism accounts for 27% of all BCS crime (two-thirds of which is vehicle vandalism); criminal damage accounts for one in five (21%) of crimes recorded by the police.
- Vehicle related-thefts accounts for 15% of all BCS crime and offences against vehicles for 13% of recorded crime
- Burglary accounts for 7% of all BCS results and 12% of recorded crime
- Violent crime represents 21% of all BCS crime. Violence against person and sexual offences accounted for 19% and 1% respectively of police recorded crimes

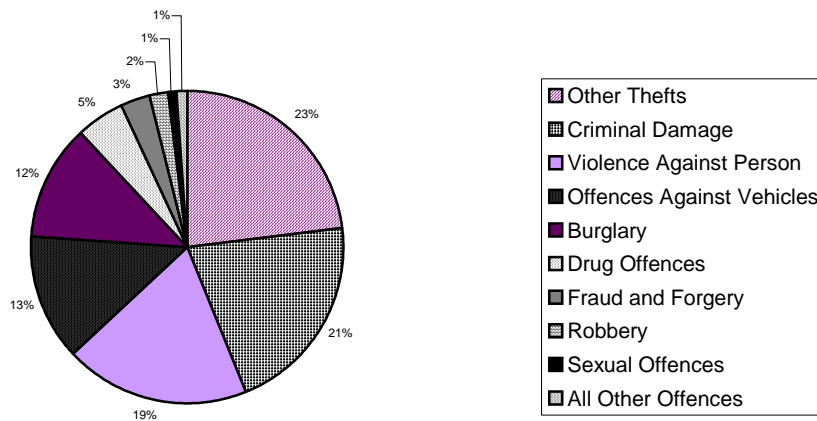
(Source: Crime in England and Wales 2007/2008: A Summary of the Main Findings, Home Office)

Chart 3.1: British Crime Survey National Results 2007/2008



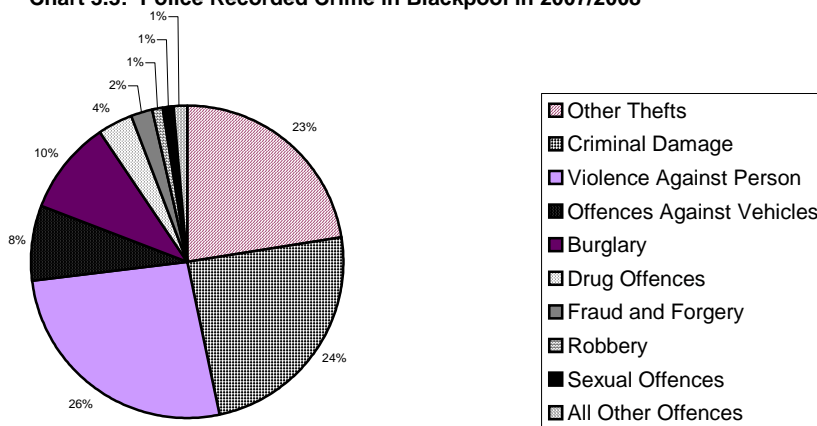
Source: Crime in England and Wales 2007/08, Home Office and Office of National Statistics

Chart 3.2: Police Recorded Crimes England and Wales 2007/2008



Source: Crime in England and Wales 2007/08, Home Office and Office of National Statistics

Chart 3.3: Police Recorded Crime in Blackpool in 2007/2008



Source: Multi Agency Data Exchange, Safer Lancashire Community Safety Partnership

4 All Crime

4.1 All Crime Trends in Blackpool

Nearly one third (30.4%) of Blackpool's recorded crimes in 2007/08 were Vehicle and Other Theft. More than one quarter (26.3%) of Blackpool's recorded offences were Violence Against Person and just under one quarter (24.2%) were Criminal damage. (9.6%) were Burglary and (3.6%) were Drug Offences. The remainder were made up of Robbery, Fraud and Forgery, Sexual Offences and Other Offences.

Source: **Multi Agency Data Exchange, Safer Lancashire Community Safety Partnership**
– Next update on release of 2008/09 data

4.2 All Crimes in Blackpool by Category

	2003/04	2004/05	2005/06	2006/07	2007/08	Percentage change 2006/07 to 2007/08
Burglary	2,685	2,204	2,065	2,147	1,807	-15.8%
Criminal Damage	5,436	5,858	5,401	5,325	4,561	-14.3%
Drug Offences	419	535	589	473	680	+43.8%
Fraud and Forgery	1,168	1,034	828	521	446	-14.4%
Robbery	247	237	166	178	187	+5.1%
Sexual Offences	222	280	258	226	246	+8.8%
Vehicle and Other Theft	7,864	7,628	7,184	7,278	5,743	-21.1%
Violence Against Person	4,536	5,786	5,391	5,206	4,965	-4.6%
Other Offences	339	248	277	284	248	-12.7%
Totals	22,916	23,810	22,159	21,638	18,883	-12.7%

Source: Multi Agency Data Exchange, Safer Lancashire Community Safety Partnership –
Next update on release of 2008/09 data

Drug Offences have increased by 43.8% between 2006/07 and 2007/08; however, numbers are small as they make up 3.6% of crimes in Blackpool in 2007/08. Sexual offences increased by 8.8%; and again numbers are small. Sexual offences make up 1.3% of crimes in Blackpool over the past year (2007/08). Robbery increased by 5.1% between 2006/07 and 2007/08; however, robbery makes up only 1% of crimes in Blackpool in 2007/08.

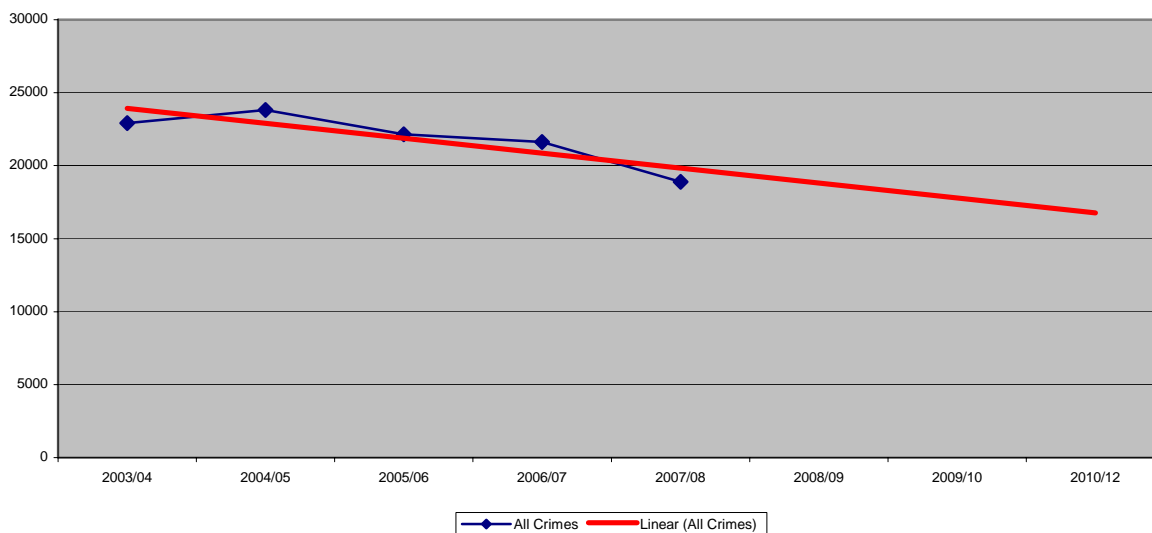
The remainder of crimes decreased between 2006/07 and 2007/08.

Total crimes decreased by 12.7% in the past year.

NB A more detailed analysis/explanation of Drug Offences in Blackpool can be seen under 7.1, and a more detailed analysis/explanation of Violence Against Person offences in Blackpool can be found under 12.1.

The number of overall crimes decreased by 17.6% between 2003/04 and 2007/08. The graph below shows a downward trend in total crimes.

Chart 4.2: All Crimes 2004 to 2008



Source Data: Multi Agency Data Exchange, Safer Lancashire Community Safety Partnership

4.3 All Crime Blackpool and Selected Comparisons

Table 4 3: All Crimes Blackpool and Selected Comparisons 2007/2008

	No Offences in Blackpool	Offences per 1,000 Blackpool	Offences per 1,000 Manchester	Offences per 1,000 Lancashire Area	Offences per 1,000 Northwest	Offences per 1,000 England & Wales
Burglary	1,810	12.7	22.9	11.3	11.9	10.9
Criminal Damage	4,568	32.0	33.3	27.7	23.1	19.3
Drug Offences	680	4.8	9.6	3.7	4.7	4.3
Offences against Vehicles	1,469	10.3	29.2	11.4	13.1	12.2
Violence Against Person	4,966	34.8	28.8	21.5	17.3	17.9
Remaining offences*	5369	37.8	55.4	30.6	26.6	27.6
Totals	18,889	132.4	179.2	106.1	96.8	92.1

Source: Number of Offences: Home Office website– Next update on release of 2007/08 data

Rates calculated by Blackpool Council based on 2006 Mid Year Estimates

* Remaining offences derived by subtraction from total of first five types of offence

The rate of offences per 1,000 people in Blackpool in 2007/08 was higher (132.4) than the national rate (100.2), the Northwest (96.8) and Lancashire Area (106.1) for total crimes per person but was lower than in Manchester (179.2).

Violence Against Person, Criminal Damage, Burglary and Drug Offences had higher rates of offences in Blackpool than the rate in the Lancashire Area, the Northwest and the national rate.

Violence Against Person had a higher rate of offence in Blackpool than in Manchester. Criminal Damage, Offences Against Vehicles, Burglary and Drug Offences had a lower rate of offence in Blackpool than in Manchester.

5 Burglary

There are two types of burglary; these being,

- Burglary in a dwelling
- Burglary in a building other than a dwelling

5.1 Burglary Trends in Blackpool

	2003/04	2004/05	2005/06	2006/07	2007/08	Percentage change 2006/07 to 2007/08
Burglary in a dwelling	1,169	900	843	879	740	-15.8%
Burglary in a building other than a dwelling	1,516	1,304	1,222	1268	1,067	-15.9%
Totals	2,685	2,204	2,065	2,147	1,807	-15.8%
Source: Multi Agency Data Exchange, Safer Lancashire Community Safety Partnership Next update on release of 2008/09 data						

Burglary made up 9.6% of Blackpool's police recorded crimes during 2007/08.

Burglary both in dwellings and in buildings other than dwellings has reduced over the past five years from 2003/04 to 2007/08.

Burglary reduced by 15.8% in the past year.

6 Criminal Damage

Criminal Damage is divided into five types:

- Criminal damage to a dwelling
- Criminal damage to a building other than a dwelling
- Criminal damage to a vehicle
- Other criminal damage (threat is a separate offence)
- Arson

6.1 Criminal Damage Trends in Blackpool

	2003/04	2004/05	2005/06	2006/07	2007/08	Percentage change 2006/07 to 2007/08
Criminal damage to a dwelling	1,459	1,654	1,423	1,405	1,305	-7.1%
Criminal damage to a building other than a dwelling	1,023	999	925	841	753	-10.5%
Criminal damage to a vehicle	2,091	2,363	2,362	2,442	1,902	-28.4%
Other criminal damage	634	656	535	515	483	-6.2%
Arson	229	186	156	122	118	-3.3%
Totals	5,436	5,858	5,401	5,325	4,561	-14.3%

Source: Multi Agency Data Exchange, Safer Lancashire Community Safety Partnership
Next update on release of 2008/09 data

Criminal damage made up almost one quarter (24.2%) of Blackpool's police recorded crimes in 2007/08.

Arson in Blackpool has reduced by almost half in the past five years. All other forms of criminal damage have also reduced between 2004 and 2008.

Criminal damage reduced by 14.3% in the past year.

7 Drug Offences

There are three types of drug offences:

- Possession of controlled drugs
- Trafficking in controlled drugs
- Other drug offences

7.1 Drug Offences Trends in Blackpool

	2003/04	2004/05	2005/06	2006/07	2007/08	Percentage change 2006/07 to 2007/08
Possession of controlled drugs	313	396	434	376	468	+24.5%
Trafficking in controlled drugs	106	139	153	96	212	+120.8%
Other drug offences	0	0	2	1	0	No calculation
Totals	419	535	589	473	680	+43.8%
Source: Multi Agency Data Exchange, Safer Lancashire Community Safety Partnership Next update on release of 2008/09 data						

Drug offences made up 3.6% of Blackpool's police recorded crimes in 2007/08.

The number of possession of drug offences went up by nearly half as much again between 2004 and 2008. Trafficking in controlled drugs doubled during the period. Total drug offences have gone up by almost two thirds between 2004 and 2008.

Total drug offences increased by 43.8% in the past year.

It should be noted that an increase in drug offences does not necessarily mean an increased problem. Increased drug crime usually means increased policing.

8 Fraud and Forgery

Fraud and Forgery can be categorised as follows:

- Fraud by company directors, etc.
- False accounting
- Cheque and credit card fraud
- Other fraud
- Bankruptcy and insolvency offences
- Forgery or use of false drug prescription
- Other forgery etc.
- Vehicle/driver document fraud

The Home Office does not provide a breakdown of the data into these categories, therefore only the overall figure will be given in the tables below.

8.1 Fraud and Forgery Trends in Blackpool

	2003/04	2004/05	2005/06	2006/07	2007/08	Percentage change 2006/07 to 2007/08
Fraud & Forgery Totals	1,168	1034	828	521	446	-14.4%

Source: Multi Agency Data Exchange, Safer Lancashire Community Safety Partnership
Next update on release of 2007/08 data

Fraud and Forgery made up 2.4% of Blackpool's police recorded crimes in 2007/08.

There was a reduction of Fraud and Forgery offences between 2004 and 2008.

There was a reduction of Fraud and Forgery offences by 14.4% in the past year.

9 Robbery

Robbery may be either:

- Robbery of personal property, or
- Robbery of business property

9.1 Robbery Trends in Blackpool

	2003/04	2004/05	2005/06	2006/07	2007/08	Percentage change 2006/07 to 2007/08
Robbery of personal property	233	213	151	154	170	+10.4%%
Robbery of business property	14	24	15	24	17	+21.4%
Totals	247	237	166	178	187	+24.3%
Source: Multi Agency Data Exchange, Safer Lancashire Community Safety Partnership Next update on release of 2008/09 data						

Robbery made up 1.0% of Blackpool's police recorded crimes in 2007/08.

Robbery of personal properties had reduced by more than one quarter in Blackpool between 2004 and 2008; however, robbery of business property had increased by just over one fifth during this time period. In actual numbers robbery of business property was small being 17 robberies during 2007/08.

Robbery had increased by nearly one quarter (24.3%) in during the past year.

10 Sexual Offences

Sexual offences are divided into three groups:

- Rape of a female
- Sexual assault on a female
- Other sexual offences

10.1 Sexual Offences Trends in Blackpool

	2003/04	2004/05	2005/06	2006/07	2007/08	Percentage change 2006/07 and 2007/08
Totals	222	280	258	226	246	+8.8%

Source: Multi Agency Data Exchange, Safer Lancashire Community Safety Partnership
Next update on release of 2008/09 data

Sexual Offences made up 1.3% of Blackpool's police recorded crimes in 2007/08.

Sexual Offences had increased between 2003/04 and 2007/08.

Sexual offences had increased by 8.8% during the past year.

11 Vehicle and Other Theft

Vehicle and other Theft:

- Theft of a vehicle
- Theft from a vehicle
- Interfering with a motor vehicle
- Theft or unauthorised taking of a pedal cycle
- Theft from person
- Shoplifting
- Other theft and handling

11.1 Vehicle – & Other Thefts trends in Blackpool

	2003/04	2004/05	2005/06	2006/07	2007/08	Percentage change 2006/07 to 2007/08
Theft of a vehicle	869	659	537	667	413	-38.1%
Theft from a vehicle	1,352	1,236	1,168	1,350	840	-37.8%
Interfering with a motor vehicle	277	244	313	449	216	-51.9%
Theft or unauthorised taking of a pedal cycle	428	438	451	510	409	-19.8%
Theft from person	433	432	430	337	293	-13.1%
Shoplifting	1,470	1,426	1,395	1,388	1,297	-6.6%
Other theft and handling	3,035	3,193	2,890	2,577	2,275	-11.7%
Totals	7,864	7,628	7184	7,278	5,743	-21.1%

Source: Multi Agency Data Exchange, Safer Lancashire Community Safety Partnership
Next update on release of 2008/09 data

Vehicle and Other Theft made up almost one third (30.4%) of Blackpool's police recorded crimes in 2007/08. This can be broken down into Offences Against Vehicles (7.8%) and Other Theft Offences (22.6%).

Vehicle and Other Thefts in Blackpool had reduced by more than one quarter over the five year period 2004 to 2008.

Offences Against Vehicles had reduced by 40.4% during the past year.

Other Theft had reduced by 11.2% during the past year.

Vehicle and Other Thefts had reduced by more than one fifth (21.1%) during the past year.

12 Violence Against Person

Violence against Person splits into two main categories; these being:

- More serious violence
- Other offences against the person

12.1 Violence Against Person Trends in Blackpool

	2003/04	2004/05	2005/06	2006/07	2007/08	Percentage change 2006/07 to 2007/08
Totals	4,536	5,786	5,391	5,206	4,965	-4.6%
Source: Multi Agency Data Exchange, Safer Lancashire Community Safety Partnership Next update on release of 2008/09 data						

Violence Against Person made up more than one quarter (26.3%) of Blackpool's police recorded crimes in 2007/08.

Violence Against the Person had increased in the years between 2003/04 and 2007/08.

Violence Against the Person had decreased by 4.6% during the past year.

Violence against the Person offences include harassment, which includes low level public order offences which are now able to be dealt with by means of PND (Penalty Notice for Disorder) and as such it was always anticipated the number of offences would rise.

13 Other Offences

Other offences are:

- Violent Disorder offences
- Other offences

13.1 Other Offences Trends in Blackpool

	2003/04	2004/05	2005/06	2006/07	2007/08	Percentage change 2006/07 and 2007/08
Totals	339	248	277	284	248	-12.7%

Source: Multi Agency Data Exchange, Safer Lancashire Community Safety Partnership
Next update on release of 2008/09 data

Other Offences made up 1.3% of Blackpool's police recorded crimes in 2007/08.

Other Offences in Blackpool had reduced between 2004/05 and 2007/08.

Other Offences had reduced by 12.7% during the past year.

14 Blackpool British Crime Survey Comparator Crime

Table 14: Blackpool British Crime Survey Comparator Crime Trends						
	2003/04	2004/05	2005/06	2006/07	2007/08	Percentage Change 2006/07 to 2007/08
BCS Acquisitive Crime	4,761	4,122	3,893	4,346	3,081	-29.1%
BCS Damage Crime	5,436	5,858	5,401	5,325	4,561	-14.3%
BCS Violent Crime	3,799	4,303	3,963	3,704	3,886	+4.9%
Total BSC Crimes in Blackpool	13,996	14,283	13,257	13,375	11,528	-13.8%
Source: Multi Agency Data Exchange, Safer Lancashire Community Safety Partnership Next update on release of 2008/09 data						

Lancashire Constabulary presents results of police recorded offences that are comparable to the British crime survey as shown in Table 15. This table shows that in the period between 2003/04 and 2007/08 Acquisitive Crime in Blackpool has reduced by 35.3%. Damage crime had reduced by 16.1% and violent crime has increased by 2.3%. The overall BSC comparator crimes reduced by 17.6% between 2004 and 2008.

BCS Acquisitive Crime and BCS Damage Crime had decreased; however, Violent Crime had increased over the five year period between 2003/04 and 2007/08.

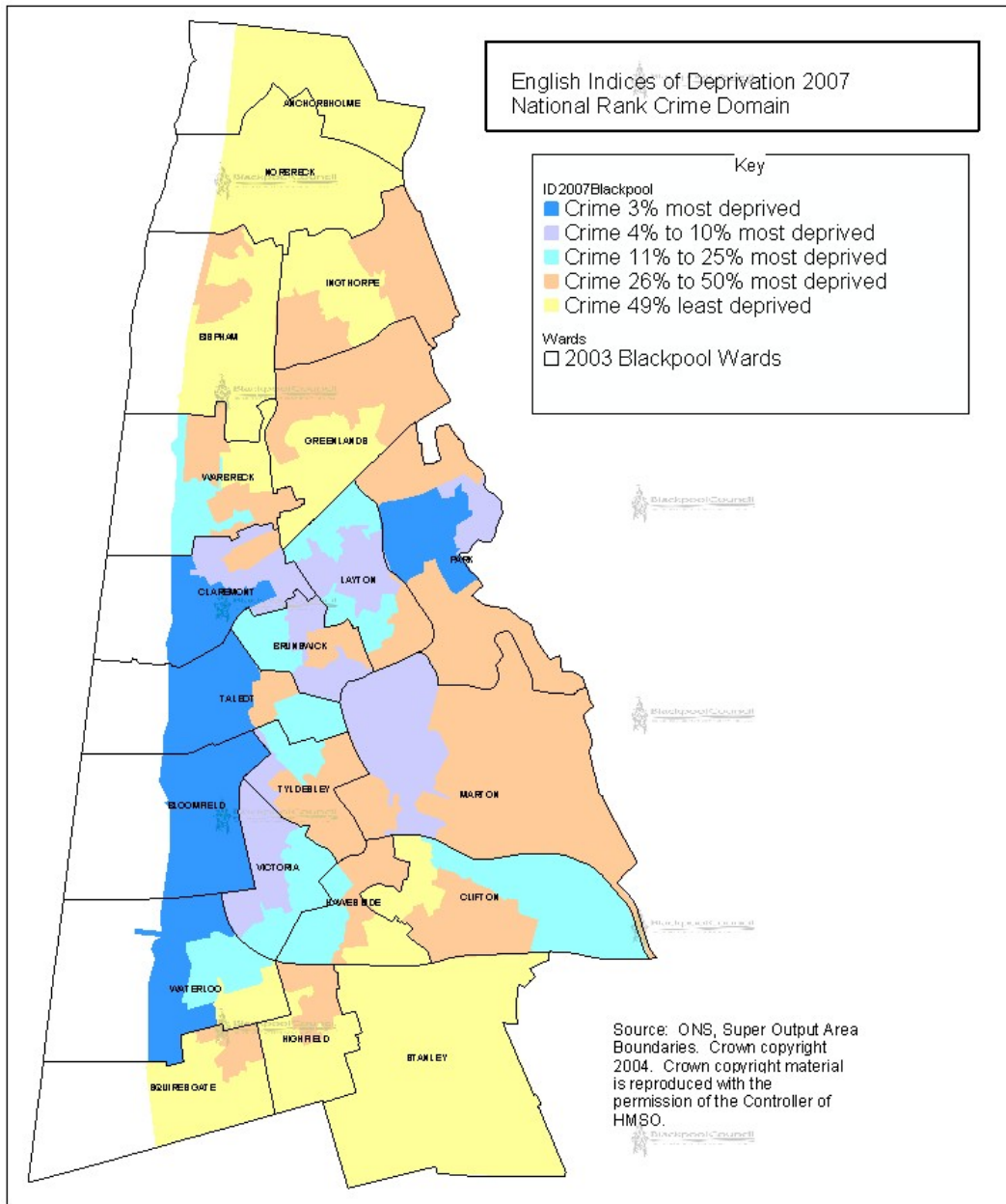
BCS Acquisitive Crime had decreased by 29.1% during the past year.

BCS Damage Crime had decreased by 14.3% during the past year.

BCS Violent Crime had increased by 4.9% during the past year.

15 English Indices of Deprivation 2007: Crime Domain

This domain measures the rate of recorded crime for four major crime themes; these being, burglary, theft, criminal damage and violence.



Reproduced from the Ordnance Survey Mapping with the permission of the Controller of Her Majesty's Stationery Office. © Crown copyright. Unauthorised reproduction infringes Crown Copyright and may lead to prosecution or civil proceedings. All rights reserved. Blackpool Borough Council 100019178, 2008.



Blackpool Council

Policy & Communications
Tourism & Regeneration Department
PO Box 77, Corporation Street,
Blackpool, FY1 1AD

corporate.policy@blackpool.gov.uk



Title: Crime Domain, National Rank, English Indices of Deprivation 2007, DCLG

Scale: 1:50000

The map above shows that there are pockets of high deprivation stretching along the promenade towards the southern end of Blackpool and in part of Park Ward.

Blackpool has 24 of its 94 Lower Super Output Areas (LSOAs) within the 10% most deprived nationally and of these 13 are in the 3% most deprived nationally.

29 LSOAs in Blackpool were in the 49% least deprived nationally.

Table 15: The number of Blackpool LSOAs by Percentile, Crime Domain 2007	
	Number of LSOAs
3% most deprived	13
4% to 10%	11
11%-20%	14
21%-30%	8
31%-40%	5
41%-50%	14
51%-60%	11
61%-70%	6
71%-80%	7
81%-90%	4
91%-100%	1
Source: English Indices of Deprivation 2007, ODPM – Next update on release of next English Indices of Deprivation	

Glossary

CDRP Crime and Disorder Reduction Partnerships

HMSO Her Majesty's Stationary Office

LSOA A "Lower Layer Super Output Area (LSOA)" is a small-standardised geographical division, created by the Office for National Statistics, for collecting and dissemination of local areas statistics. Each LSOA is designed to average some 1,500 residents within a minimum of 400 households; there are either four or five to each of the 21 Blackpool electoral wards and 94 LSOAs make up the Blackpool Council administrative area. There are 32,482 LSOAs in England.

MADE Multi Agency Data Exchange, Safer Lancashire Community Partnership

ODPM Office of the Deputy Prime Minister

NCRS National Crime Recording Standard

Where can I get further information on the issues covered in Blackpool Figures?

Blackpool Figures collects its summary information from a range of detailed reports and web sites. All sources are clearly acknowledged and referenced throughout the work. Much additional information is available within these original sources; a selection of the most frequently utilised web sites are presented below. This is not a definitive list but it does provide a useful starting point.

Selected Website Reference

[Home Office Research and Statistics Website](#)

[Safer Lancashire: The Community Safety Partnership Website, & Multi Agency Data Exchange \(MADE\)](#)

[Bsafeblackpool](#)

If further advice is required contact:

Email: corporate.policy@blackpool.gov.uk

Telephone: 01253 477121

Ordnance Survey Data and Crown Copyright Information

The Ordnance Survey mapping included within this document is provided by Blackpool Borough Council, under licence from the Ordnance Survey in order to fulfil its Public function to make it available Council held public domain information. Persons viewing this mapping should contact Ordnance Survey copyright for advice if they wish to licence Ordnance Survey mapping/map data for their own use. The Ordnance Survey website can be found at www.ordsvy.gov.uk.

ONS, Super Output Area Boundaries, Crown Copyright 2004. Crown Copyright material is reproduced with the permission of the Controller of HMSO.