

Health

Life Expectancy

Key Facts

- Life expectancy in Blackpool is a major cause for concern; the data suggests that while life expectancy increased slightly over the 10 year period, progress in extending the Blackpool life expectancy figures does not compare favourably with the national trend and other areas.
- The main causes of all deaths in Blackpool are broadly similar to those for England although deaths due to the digestive system and respiratory system are a little higher in Blackpool than in England as a whole.
- The three main causes for reduced life expectancy for men in Blackpool are digestive diseases including cirrhosis of the liver, coronary heart disease and overdoses and poisoning.
- The top three causes for reduced life expectancy for women in Blackpool is digestive diseases including cirrhosis of the liver, respiratory diseases and lung cancer.

Life Expectancy from Birth

Life expectancy at birth for an area is an estimate of the average number of years a new-born baby would survive if he or she experienced that particular area's age-specific mortality rates for that time period of the birth throughout his or her life. The figure reflects mortality among those living in the area in each time period.

Male Life Expectancy from Birth

Male life expectancy at birth for the years of 2005-2007 for Blackpool was **73.2** years. This was the lowest figure for England & Wales, and the 6th lowest in the United Kingdom. (Source: ONS Life Expectancy 2005-2007)

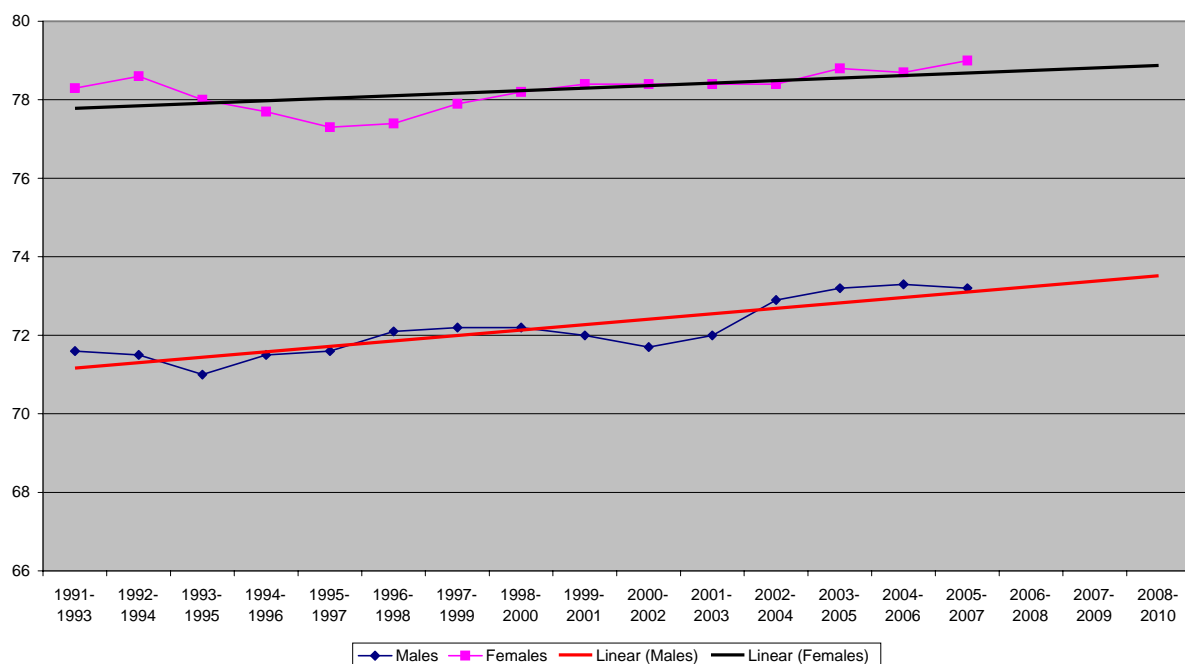
Female Life Expectancy from Birth

Female life expectancy at birth for the years of 2005-2007 for Blackpool was **79.0** years. This is the 6th lowest in England & Wales and the 13th lowest in the United Kingdom. (Source: ONS Life Expectancy 2005-2007)

Trends in Life Expectancy in Blackpool

Life expectancy from Birth is showing a slight upward trend for both males and females when data is looked at over a longer period.

Chart 1: Life Expectancy at Birth Trends in Blackpool(Source: ONS)



Glossary

ONS Office for National Statistics

Where can I get further information on issues covered in Blackpool Figures?

If further advice is required contact:

Emails: corporate.policy@blackpool.gov.uk

[ONS website](#)

[Clinical and Health Outcomes Knowledge Base](#)

Further information about health in Blackpool can be obtained from the Blackpool PCT website in a [Report on the Health of the Population of Blackpool, Fylde and Wyre 2006](#).

Crown Copyright material is reproduced with the permission of the Controller of HMSO.