

[Home](#) > [Residents](#) > [Life events](#) > [Wedding venues](#) > [The Wedding Chapel Blackpool](#) > [About the venue](#)

# About the venue

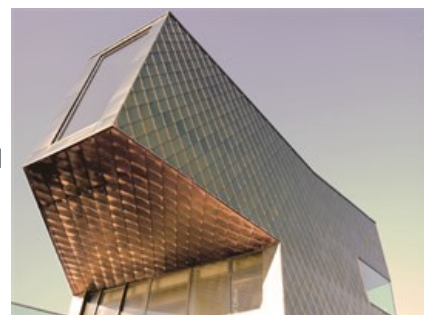
Last Modified September 14, 2022



The Wedding Chapel is located in Festival House on Blackpool's famous promenade.

Formally known as Festival House, The Wedding Chapel Blackpool was renamed in June 2014.

Architecturally designed by dRMM, standing on a stepped concrete plinth containing recycled and phosphorescent glass, the engineered timber building is a deliberate eye-catcher and lookout point, clad in golden stainless steel shingles. The expressive form and detailing is a celebration of Blackpool's renowned energy, the bracing coastal weather combined with super-sustainable construction.



## Structure

The structure consists of pre-fabricated cross-laminated timber pane, as a durable, high strength alternative to steel. The project has achieved a BREEAM bespoke rating of excellent, with very low air permeability and maximised access to daylight reducing energy consumption and carbon emissions.

Festival House was a 2012 WINNER RIBA, Royal Institute of British Architects, Award. RIBA Award winning buildings set the standard for good architecture.

[Enquire now](#)

## Additional information

[Rooms available](#)

[Style weddings](#)

[Location](#)

[Photo gallery](#)

[↑ Back to top](#)

Municipal Buildings  
Corporation Street  
Blackpool  
FY1 1NF

[Accessibility](#)  
[Contact us](#)  
[Data protection and privacy](#)  
[Privacy and cookies](#)  
[Terms and conditions](#)  
[Blackpool Council companies](#)

Enter your postcode to find your nearest schools, council services and more

search

### Stay upto date

Sign up to our regular newsletters

### Follow us

