

[Home](#) > [Your Council](#) > [Creating a better Blackpool](#) > [Regeneration](#)

Anchorholme Coast Protection Scheme

Last Modified February 25, 2026



We're improving coastal defences at Anchorholme.

The Anchorholme Coast Protection Scheme will safeguard homes and businesses, protecting the community for years to come.

Blackpool's coastline is under growing threat of erosion. If we don't take action, over 5,000 properties in and around Anchorholme could be at risk of flooding.

The council has been allocated £11m by the Environment Agency to construct rock groynes on the beach. A rock revetment will also be built to provide a long-term solution to movement and damage of the existing concrete defences.

For updates, keep checking this page or subscribe to our [sea defences newsletter](#).

Compound installation works

Preparation works for the Anchorholme Coast Protection Scheme begin 26 January 2026, with the setup of two construction compounds.

One compound will be located on the existing site on Princes Way, next to Little Bispham tram stop. The other will be a new site on the grass area along Queens Promenade, extending from the junction with Princes Way to the tram crossing opposite Norkeed Court.

Princes Way closure

To enable access and utility works, Princes Way will be closed from 27 January to 6 March 2026 at the junction with Queen's Promenade, with the closure extending just past the existing compound. The rest of Princes Way will remain open at Kingsway and Anchorholme Lane West, with a signed diversion in place. Some on street parking on Princes Way will be unavailable.

Pedestrian access will remain open. A section of Cycle Route 62 will close periodically, with diversions provided.

The work

Rock groynes

Five Y and crank shaped rock groynes will be installed on the beach at Anchorholme. These will trap sand and raise the beach level, helping to absorb wave energy and reduce the size of waves reaching the sea wall during storms, which will lower the risk of flooding.

To allow access for pedestrians and authorised vehicles on the beach, a series of access ramps will be built into the groynes.

Rock revetment

A rock revetment will also be built to provide a long-term solution to movement and damage of the existing concrete defences. It will absorb wave energy more effectively than the current smooth concrete slope, offering improved flood protection. The revetment work

will be carried out by contractor Balfour Beatty at no cost to the council.

The current beach access steps and ramps will be modified to allow access via the rock revetment.

Construction compounds

Two construction compounds will be established at the southern end of the scheme (adjacent to Little Bispham tram stop) to support the works and provide access for materials and equipment onto the beach.

Why it's needed

The existing coastal defences, which opened in 2017, have not performed as the designers expected. In a localised area, movement and damage to the revetment structure has occurred.

To address this, large rocks will be added to the existing revetment. This will add weight to stabilise the structure and protect it from further damage.

The rock revetment will also absorb wave energy more effectively than the existing smooth concrete slope, providing better flood protection. In 2018 (after the existing defences were designed and built), updated climate change projections for the UK were published indicating that future sea levels will rise more than previously predicted.

Though the existing sea wall height does not need to rise, action is needed to address the growing flood risk. Rising sea levels and larger waves could breach the existing defences without additional measures.

The need for groynes

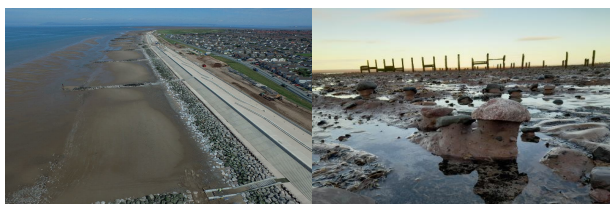
A healthy beach is the first line of defence against coastal flooding and erosion. Although Blackpool's beach levels naturally fluctuate throughout the year, there is a long-term trend of erosion and beach lowering.

The underlying clay on Anchorsholme beach has at times become exposed. When this erodes the beach is lost permanently. Intervention is needed to stabilise the beach and maintain its protective function.

Rock groynes will trap sand and raise beach levels. This will help absorb some wave energy and reduce the size of the waves that reach the revetment during storms, lowering the risk of flooding.

A higher and more stable beach will also enhance public use, and the addition of rocks will create habitats, boosting biodiversity.

Rock groynes have been effective along the coast at Rossall to the north. There are also plans to implement them in the southern areas of Blackpool.



Rock groynes at Rossall Beach where they have significantly raised the beach sand levels.

Beach lowering at Anchorsholme has at times caused the clay underneath to become exposed.

Design and layout

Rock headlands

Five rock headlands will be installed on the beach at Anchorsholme.

The headlands will be a mix of Y and crank tail shapes. Each headland will include a crossover ramp to allow pedestrians and emergency vehicles access.

Rock revetment

The rock revetment will be installed on top of the existing sloped sea wall. This will start at Little Bispham tram stop and finish roughly in line with Kingsway.



Visualisation 2

Examples of similar rock groyne and rock revetment structures at Rossall (left) and Rhyl (right)

Beach access

Once the work is complete, new steps will allow access to the beach. The steps will be built in the same location as the existing beach access steps. The top section of the current steps from the promenade will remain intact.

Access along the beach will be available via concrete ramps built near the start of each groyne. The new steps and ramps will be designed to extend below beach level to account for natural beach variations.

During construction

During the construction, the beach will be a busy site with the operation of large equipment and rocks temporarily stored ahead of final placement. To ensure everyone's safety, the public will be asked to stay clear of the working area.

The existing beach access steps will close temporarily to enable construction of the new steps and manage safety between the public and machines operating on the beach. The works will be planned to ensure that some of the steps remain open, allowing people to exit the beach in case of an emergency.



Examples of similar beach access structures at Cleveleys (left) and Rossall (right)

Beach access visualisations

Construction

Works on the beach and the revetment wall are due to start in May 2026.

Normal working hours will be Monday to Friday between 7.00am and 7.00pm. Work on the beach will vary daily within these hours to align with tide times.

From 26 January 2026, two construction compounds will be established near Little Bispham tram stop. As well as using the former parking/compound area to the north of Princes Way, an additional area to the south of the road, between the tramway and cliff slope, will also be required.

Princes Way is expected to remain open during the main works on the beach and revetment, but there will be a closure during the compound install.

A small section of the promenade will be closed occasionally to allow construction machinery and deliveries to access the existing slipway and beach. Clear pedestrian diversion routes will be established to guide people safely past the compounds and beach access point.

The council is working closely with the contractors Balfour Beatty to minimise disruption. Balfour Beatty is a member of the [Considerate Constructors scheme](#), which requires high standards to be met and where possible exceeded.

A construction environmental management plan has been produced. This plan contains provisions to ensure that environmental concerns such as noise, vibration, dust and pollution risks are effectively managed.



Construction compounds

Project timeline

The expected project timeline is as follows:

- January 2026 - Compound install
- May 2026 - Start of main works
- August 2027 - Revetment completion
- January 2028 - Groynes completion

Funding

The council has been allocated £11m by the Environment Agency for the construction of rock groynes on the beach.

The rock revetment will be delivered by contractors Balfour Beatty at no cost to the council, with an estimated value of around £20m.

In total, the project is valued at approximately £31m.

Consultation

In November 2024 the council launched a consultation into the scheme. Over 100 responses were received. These were considered before submitting the planning application.

Planning

The scheme's planning application has been approved.

Keep in touch

We'll keep you informed through a variety of channels, including:

- [Social media](#)
- [Press releases](#)
- The Blackpool Council website
- [The sea defences e newsletter](#)

If you have any questions about the scheme, please email anchorsholme@blackpool.gov.uk

Report an issue

To report an urgent issue with the works, please contact any of the following:

- Balfour Beatty (contractors): chris.leach@balfourbeatty.com
- Blackpool Council Customer First: 01253 477477
- Public liaison officer: jane@therabbitpatch.co.uk or 07932143431

Sea defences newsletter

To stay updated on the progress of the Anchorsholme Coast Protection Scheme, and our other sea defence projects, [sign up to our sea defences newsletter](#).

FAQs

We've put together a list of frequently asked questions below.

Can't find the answer you're looking for? Get in touch with the project team at anchorsholme@blackpool.gov.uk

What are the typical working hours?

Normal working hours will be Monday to Friday between 7.00am and 7.00pm. Work on the beach will vary daily within these hours to align with tide times.

Will any roads need to be closed?

To enable access and utility works, Princes Way will be closed from 27 January to 6 March 2026 at the junction with Queen's Promenade, with the closure extending just past the existing compound. The rest of Princes Way will remain open at Kingsway and Anchorsholme Lane West, with a signed diversion in place. Some on street parking on Princes Way will be unavailable.

During the main works on the beach and revetment wall, no road closures are expected.

Will there be any changes to pedestrian access during the works?

During the compound install, no footpaths will be closed.

Once work on the groynes begins, the beach will be a busy site with the operation of large equipment and rocks temporarily stored ahead of final placement. To ensure everyone's safety, we will ask the public to stay clear of the working area.

We will temporarily close the existing beach access steps to enable construction of the new steps and manage safety between the public and machines operating on the beach. The works will be planned to ensure that some of the steps remain open, allowing people to exit the beach in case of an emergency.

Will there be any changes to cycle access during the works?

Some sections of National Cycle Route 62 will need to close periodically. Signed diversions will be in place. More information can be found on the [Walk Wheel Cycle Trust website](#).

I want to report an urgent issue with the works?

To report an urgent issue with the works, please contact any of the following:

- Balfour Beatty (contractors): chris.leach@balfourbeatty.com
- Blackpool Council (Customer First): 01253 477477
- Public Liaison Officer: jane@therabbitpatch.co.uk or 07932143431

The compound hoardings are damaged. How do I report this?

To report damage to the compound hoardings, please contact:

- Balfour Beatty (contractors): chris.leach@balfourbeatty.com
- Blackpool Council (Customer First): 01253 477477
- Public Liaison Officer: jane@therabbitpatch.co.uk or 07932143431

I have a question about the scheme. Who do I contact about this?

You can get in touch with the project team at anchorsholme@blackpool.gov.uk

Alternatively, you can contact the scheme's Public Liaison Officer at jane@therabbitpatch.co.uk or phone 07932143431

How has the scheme been funded?

The council has been allocated £11m by the Environment Agency for the rock groynes on the beach.

The rock revetment will be built by the contractors Balfour Beatty, at no cost to the council.

Why is the work needed?

Blackpool's coastline is under growing threat of erosion. If we don't take action, over 5,000 properties in and around Anchorsholme could be at risk of flooding.

Additional information

[↑ Back to top](#)

Blackpool Council

Municipal Buildings
Corporation Street
Blackpool
FY1 1NF

Information and help

Accessibility
Contact us
Privacy and cookies
Terms and conditions
Blackpool Council companies

Find my nearest

Enter your postcode to find your nearest schools, council services and more

Stay upto date

Follow us

Sign up to our regular newsletters

