

[Home](#) > [Residents](#) > [Parks and community facilities](#) > [Parks, playgrounds and community facilities](#) > **Stanley Park**

Stanley Park

Last Modified August 15, 2018

[Skip to main content](#)  

Visiting Stanley Park

Stanley Park is Blackpool's main park and offers a blend of:

- Landscape design
- Historical buildings
- Stunning gardens
- Fun activities

The main entrance is situated on West Park Drive, FY3 9HU.

A free car park can be found at the end of the West Park Drive entrance.

Children's play area

Animal farm themed play area, aimed at 2-8 year olds containing modern versions of playground classics such as:

- Rocking horses
- See saws
- Slides
- Climbing frames
- Swings
- Roundabouts

The play area also contains play features including:

- Interactive surfboard
- Rota web
- Play vehicle
- 3D spring ride ons

Opening times

Stanley Park is open dawn until dusk every day of the year and opening hours are clearly signposted at major entrances.

A horn is sounded 15 minutes before the park is closed.

Facilities

Stanley Park contains a fantastic range of facilities, including:

- All weather pitches
- Football
- Rugby

- Indoor sports centre
- Outdoor sports arena
- Golf course
- Cricket ground
- Model village
- National BMX race track
- Skate park
- Tennis courts
- Flat and crown green bowling
- Historic Art Deco café
- Classic children's playground suitable for 2 - 8 year olds
- Timber adventure playground suitable for 8 - 14 year olds
- Crazy golf
- Trampolines
- Boat hire
- Bandstand
- Ice cream kiosks
- Public parking
- Public Toilets

Visitor centre

The visitor centre contains displays about the park, as well as information leaflets and guides about Blackpool and its green spaces.

It is also the main building for indoor events, talks and activities.

The centre is available to hire for birthday parties, courses training and events. To learn more please contact us on 01253 478358.

Memorials and sponsorship

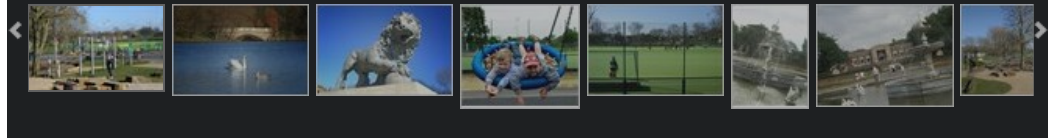
There are many opportunities to sponsor an area in the park, either as a present or to provide a place to sit and remember someone special.

Please call 01253 478358 or email parks@blackpool.gov.uk for more details and see the [park prices and charges](#)

For any queries relating to Blackpool Sports Centre/Arena - please telephone: 01253 478470



Stanley Park playground



Additional information

[Stanley Park fees and charges](#)

[The Friends of Stanley Park](#)

[↑ Back to top](#)



Residents

- [Advice-and-support](#)
- [Benefits](#)
- [Blackpool-Illuminations](#)
- [Council-tax](#)
- [Education-and-schools](#)
- [Health-and-social-care](#)
- [Housing](#)
- [Libraries-arts-and-heritage](#)
- [Life-events](#)
- [Parking-roads-and-transport](#)
- [Parks-and-community-facilities](#)
- [Planning-environment-and-community](#)
- [Sports-and-leisure](#)
- [Waste-and-recycling](#)

Business

- [Business-rates](#)
- [Business-support-and-advice](#)
- [Commercial-waste](#)
- [Food-hygiene](#)
- [Licensing-and-permits](#)
- [Residential-landlords](#)
- [Working-with-the-council](#)

Your Council

- [Blackpool-Council-jobs](#)
- [Citizenship](#)
- [Community-rights](#)
- [Council-meetings](#)
- [Creating-a-better-Blackpool](#)
- [Have-your-say](#)
- [Statistics-and-research](#)
- [The-Council](#)
- [Transparency-and-open-data](#)
- [Voting-and-elections](#)
- [Your-councillors](#)