

[Home](#) > [Residents](#) > [Life events](#) > [Wedding venues](#) > [The Wedding Chapel Blackpool](#) > **About the venue**

About the venue

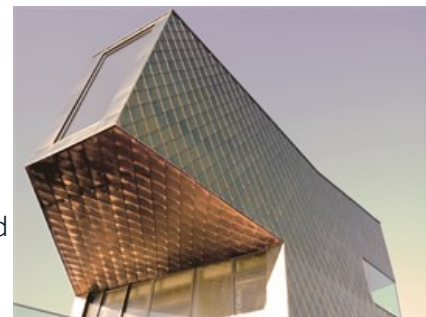
Last Modified December 10, 2018

[Skip to main content](#)  

The Wedding Chapel is located in Festival House, which includes a large sea view restaurant and terrace at Promenade level, The Beach House. Located in Lancashire, on Blackpool's famous promenade.

Formally known as Festival House, The Wedding Chapel Blackpool was renamed in June 2014.

Architecturally designed by dRMM, standing on a stepped concrete plinth containing recycled and phosphorescent glass, the engineered timber building is a deliberate eye-catcher and lookout point, clad in golden stainless steel shingles. The expressive form and detailing is a celebration of Blackpool's renowned energy, the bracing coastal weather combined with super-sustainable construction.



Structure

The structure consists of pre-fabricated cross-laminated timber pane, as a durable, high strength alternative to steel. The project has achieved a BREEAM bespoke rating of excellent, with very low air permeability and maximised access to daylight reducing energy consumption and carbon emissions.

Festival House was a 2012 WINNER RIBA, Royal Institute of British Architects, Award. RIBA Award winning buildings set the standard for good architecture.

[Enquire Now](#)

Additional information

[Rooms available](#)

[Style weddings](#)

[Location](#)

[Photo gallery](#)

Residents

- [Advice-and-support](#)
- [Benefits](#)
- [Blackpool-Illuminations](#)
- [Council-tax](#)
- [Education-and-schools](#)
- [Health-and-social-care](#)
- [Housing](#)
- [Libraries-arts-and-heritage](#)
- [Life-events](#)
- [Parking-roads-and-transport](#)
- [Parks-and-community-facilities](#)
- [Planning-environment-and-community](#)
- [Sports-and-leisure](#)
- [Waste-and-recycling](#)

Business

- [Business-rates](#)
- [Business-support-and-advice](#)
- [Commercial-waste](#)
- [Food-hygiene](#)
- [Licensing-and-permits](#)
- [Residential-landlords](#)
- [Working-with-the-council](#)

Your Council

- [Blackpool-Council-jobs](#)
- [Citizenship](#)
- [Community-rights](#)
- [Council-meetings](#)
- [Creating-a-better-Blackpool](#)
- [Have-your-say](#)
- [Statistics-and-research](#)
- [The-Council](#)
- [Transparency-and-open-data](#)
- [Voting-and-elections](#)
- [Your-councillors](#)